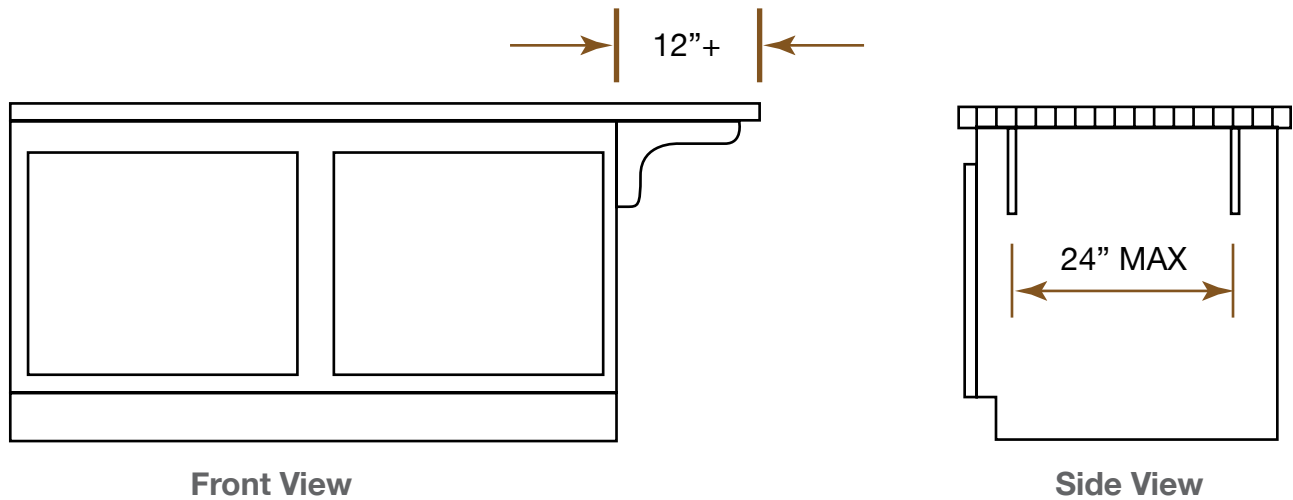


KITCHEN COUNTER TOP OVERHANG INSTRUCTIONS

3601 S. Banker • St. Effingham, IL 62401 • P.O. BOX 609 • Ph: (888) 431-2667 • Fax: (800) 433-2667

Overhang On Ends

In the case that a top is placed on a base that results in an overhang of **12"** or more inches on the ENDS, the overhang portion must be stabilized by brackets. (See illustration below.)



Overhang On Sides

In the case that a top is placed on a base that results in an overhang of **8"** or more inches on the SIDES, the overhang portion must be stabilized by brackets. (See illustration above.)

