



**John
BOOS**
Since 1887

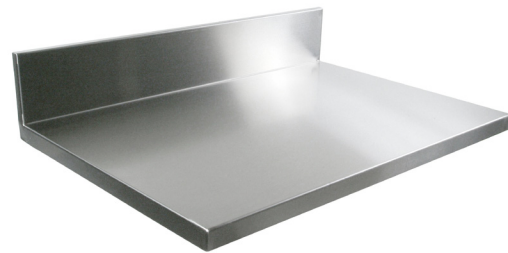
ITEM #: _____ QTY: _____
 MODEL #: _____
 PROJECT NAME: _____

3601 S. Banker St. Effingham, IL 62401 • P.O. BOX 609 • Ph: (888) 431-2667 • Fax: (800) 433-2667

"KCT-SS" STAINLESS STEEL COUNTERTOPS (16GA)

FEATURES:

- 1-1/2" THICK - 16GA STAINLESS STEEL COUNTERTOP
- TYPE 304 STAINLESS STEEL WITH #4 POLISH, SATIN FINISH
- 1/8" RADIUS ALL TOP EDGES & VERTICAL CORNERS
- SOLID UNDERLAYMENT - 1-3/8" THICK PARTICLE BOARD
- MELAMINE BACKING
- OPTIONAL SINK & STOVE CUTOUTS
- OPTIONAL 4" STAINLESS STEEL BACKSPLASH MATERIAL (5-1/2" OAH)



25" WIDE - WITHOUT BACKSPLASH

MODEL	SIZE (LxWxD)	WT. (LBS)	QTY
KCT-SS2425	24" X 25"	41	
KCT-SS3625	36" X 25"	61	
KCT-SS4825	48" X 25"	81	
KCT-SS6025	60" X 25"	100	
KCT-SS7225	72" X 25"	121	
KCT-SS8425	84" X 25"	140	
KCT-SS9625	96" X 25"	160	
KCT-SS12025	120" X 25"	200	

25" WIDE - WITH 6" BACKSPLASH

MODEL	SIZE (LxWxD)	WT. (LBS)	QTY
KCT-BS2425	24" X 25"	88	
KCT-BS3625	36" X 25"	111	
KCT-BS4825	48" X 25"	128	
KCT-BS6025	60" X 25"	165	
KCT-BS7225	72" X 25"	192	
KCT-BS8425	84" X 25"	221	
KCT-BS9625	96" X 25"	252	
KCT-BS12025	120" X 25"	307	

32" WIDE - ISLAND TOPS

MODEL	SIZE (LxWxD)	WT. (LBS)	QTY
KCT-SS4832	48" X 32"	103	
KCT-SS6032	60" X 32"	129	
KCT-SS7232	72" X 32"	153	
KCT-SS9632	96" X 32"	204	

38" WIDE - ISLAND TOPS

MODEL	SIZE (LxWxD)	WT. (LBS)	QTY
KCT-SS4838	48" X 38"	122	
KCT-SS6038	60" X 38"	152	
KCT-SS7238	72" X 38"	182	
KCT-SS9638	96" X 38"	241	

ALL UNITS SHIP UNASSEMBLED FOR REDUCED SHIPPING COST. ALL DIMENSIONS ARE TYPICAL. TOLERANCE +/- .500"
 John Boos & Co. is constantly engaged in a program of improving products and therefore reserves the right to change specifications without prior notice.