



**John  
BOOS**  
Since 1887

ITEM #: \_\_\_\_\_ QTY: \_\_\_\_\_  
 MODEL #: \_\_\_\_\_  
 PROJECT NAME: \_\_\_\_\_

3601 S. Banker St. Effingham, IL 62401 • P.O. BOX 609 • Ph: (888) 431-2667 • Fax: (800) 433-2667

## **"ETNS" STAINLESS STEEL ENCLOSED WORK TABLES** **SLIDING DOOR STYLE WITH 1-3/4" THICK HARD ROCK MAPLE TOP**



### **FEATURES:**

- 1-3/4" THICK HARD ROCK MAPLE TOP "SC" STYLE
- MAPLE TOP IS FINISHED WITH PENETRATING OIL WITH OPTIONAL NATURAL CLEAR VARNIQUE FINISH
- STAINLESS STEEL TOP, CABINET, & UNDERSHELF, TYPE 300 STAINLESS STEEL WITH #4 POLISH, SATIN FINISH
- UNDERSHELF IS SECURED IN A FIXED POSITION, 14-7/8" ABOVE FLOOR
- SHIPPED STANDARD WELDED SET-UP
- OPTIONAL DRAWERS, CASTERS, POT RACKS, ETC. AVAILABLE
- NSF AND DEPT. OF AGRICULTURE APPROVED

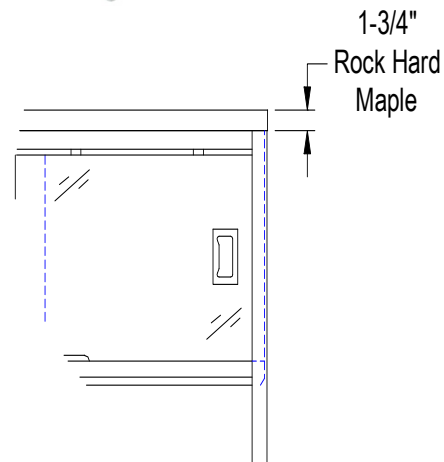


### **CONSTRUCTION:**

- TOP: STAINLESS STEEL TOPS ARE TIG WELDED, EXPOSED WELDS ARE POLISHED TO MATCH ADJACENT SURFACE.

### **MATERIAL:**

- TOP: 1-3/4" THICK HARD ROCK MAPLE FINISHED WITH PENETRATING OIL
- DOORS: 18 GAUGE TYPE 300 STAINLESS STEEL, #4 POLISH WITH SATIN FINISH
- SHELF: 18 GAUGE TYPE 300 STAINLESS STEEL, #4 POLISH WITH SATIN FINISH
- LEGS: 1-1/2" SQUARE O.D., 16 GAUGE TYPE 300 TUBULAR STAINLESS STEEL
- PANELS: 22 GAUGE TYPE 300 STAINLESS STEEL, #4 POLISH WITH SATIN FINISH
- FEET: 1" ADJUSTABLE STAINLESS STEEL FEET



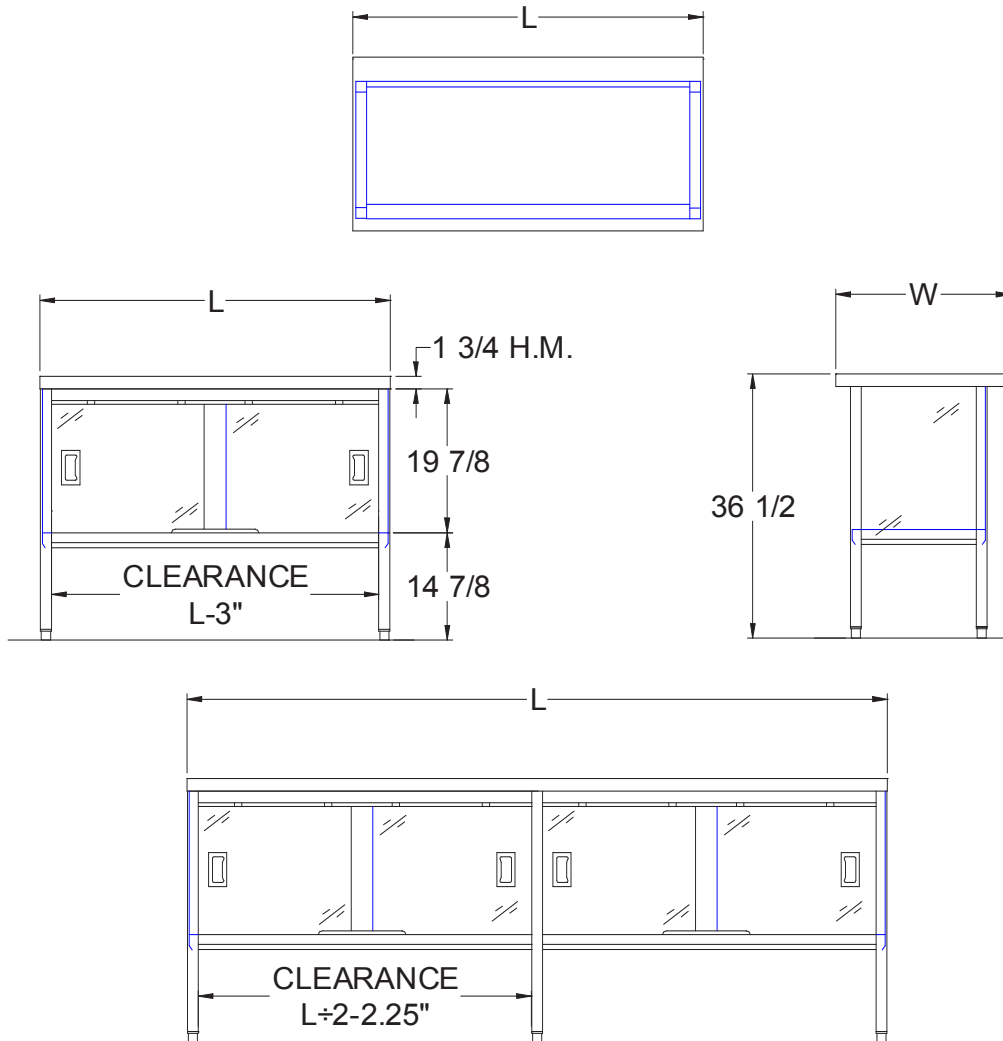
### **1-3/4" MAPLE TOP**

24" WIDE	QTY	30" WIDE	QTY
ETNS01		ETNS06	
ETNS02		ETNS07	
ETNS03		ETNS08	
ETNS03A		ETNS08A	
ETNS04		ETNS09	
ETNS04A		ETNS09A	
ETNS05		ETNS10	

### **OPTIONAL ACCESSORIES**

DESCRIPTION	MODEL #	QTY
CASTERS		
OVERSHELVES		
POT RACKS		
INTERMEDIATE SHELVES		
S/S BUN PAN RACK		

## DETAILED SPECIFICATIONS



- UNITS 7 FT. AND LARGER ARE FURNISHED WITH SIX LEGS.
- FINISHED SIZE OF UNDERSHELF.  
 SHELF LENGTH = LENGTH MINUS 4.875"  
 SHELF WIDTH = WIDTH MINUS 4.25"

### 1-3/4" MAPLE TOP

LENGTH	24" WIDE	WT. (LBS)	30" WIDE	WT. (LBS)
48"	ETNS01	140	ETNS06	160
60"	ETNS02	170	ETNS07	196
72"	ETNS03	195	ETNS08	228
84"	ETNS03A	230	ETNS08A	257
96"	ETNS04	265	ETNS09	285
108"	ETNS04A	293	ETNS09A	336
120"	ETNS05	320	ETNS10	387

SOME UNITS SHIP UNASSEMBLED FOR REDUCED SHIPPING COST. ALL DIMENSIONS ARE TYPICAL. TOLERANCE +/- .500"  
 John Boos & Co. is constantly engaged in a program of improving products and therefore reserves the right to change specifications without prior notice.



3601 S. Banker St. • Effingham, IL 62401 • PO BOX 609 • quotes@johnboos.com



[www.johnboos.com](http://www.johnboos.com)